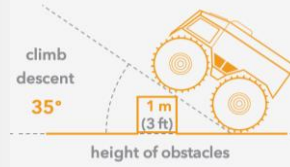


SHERP all-terrain vehicle has no analogues in functionality and technical characteristics in the world. SHERP is a truly innovative amphibious all-terrain vehicle, able to work under extreme operational conditions and on any type of terrain, overcome obstacles and float on water. It's reliable and low cost in maintenance.

CLIMBING SLOPES



SHERP easily overcomes most of the types of rough terrain, including slopes with an angle of up to 35°



ANY TYPE OF TERRAIN



40 km/h
(25 mph)

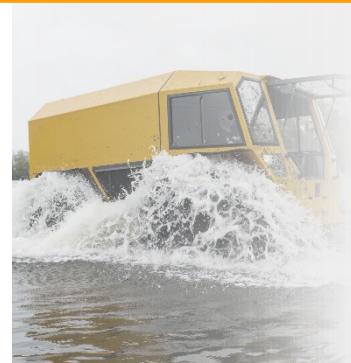
grass, gravel, sand, peat, moor, marsh, sand, dunes, rocks, scree, snow, ice, climbing from water to ice

ADJUSTABLE TIRE PRESSURE



The vehicle is equipped with a unique air-circulation system that uses exhaust gases to inflate or deflate the tires thanks to innovative pneumatic circuit that connect the tires.

FLOATING ON WATER



6 km/h
(3.7 mph)

ponds, lakes, rivers, sandbanks, shores, coasts, frozen waters

TRANSPORTATION SOLUTION



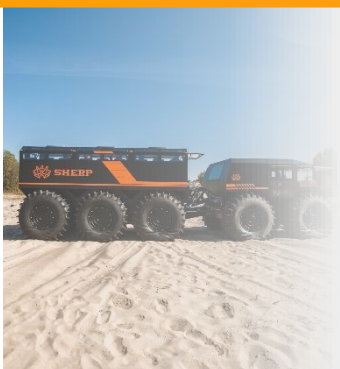
Loading capacity

5 000 kg
(11 023 lb)



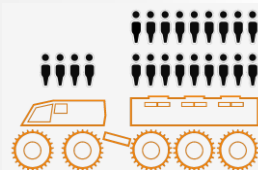
Up to 2 SHERP Pro on board

LOADING CAPACITY



Up to 3 400 kg
(7 500 lb)

Up to 22 passengers



MULTIFUNCTIONAL SERVICE



Ready-made solutions for various needs.

Key Industries

Mining, Oil & Gas

- Geo-exploration, surveying, and mining
- Exploration unit and equipment carrier, with significantly higher speed, can be used in winter, flooding periods or at the peat bogs



Construction

- Real estate development, dredging works and construction
- Equipment, tools and personnel delivering, ensuring the access to any job site in any conditions and terrains



Powerlines

- Energy producers and deliverers, power generation and infrastructure
- Servicing the energy infrastructure and equipment delivery, power lines repair in remote areas



Search & Rescue

- Emergency services, search & rescue operations, fire departments
- Rescue people from the flooded areas, airplane crash recovery, rescue operations on ice.



Humanitarian

- Medical and healthcare providers, supply activities
- People, medical supplies, food and water delivering to the remote areas



Humanitarian



SHERP - the official supplier of the United Nations (World Food Programme). WFP won the 2019 Best Transport Achievement Award for the SHERP project: Augmenting WFP's last-mile capacity by using amphibious all-terrain vehicles.

SHERP Solution:

- A **75% reduction** in cost resulted in effective savings in transport cost compared to airdrops - transportation cost **decreased from 4 000\$ to 200\$ per 1 ton**
- USD 1.7m saved in 5 weeks** by replacing airfreight with cost-efficient overland transport



More info:



<http://sherp.global>



<https://drive.google.com/drive/folders/1Gs8reOHkPL5tDatVblrPlkhOd9CcF1pl>