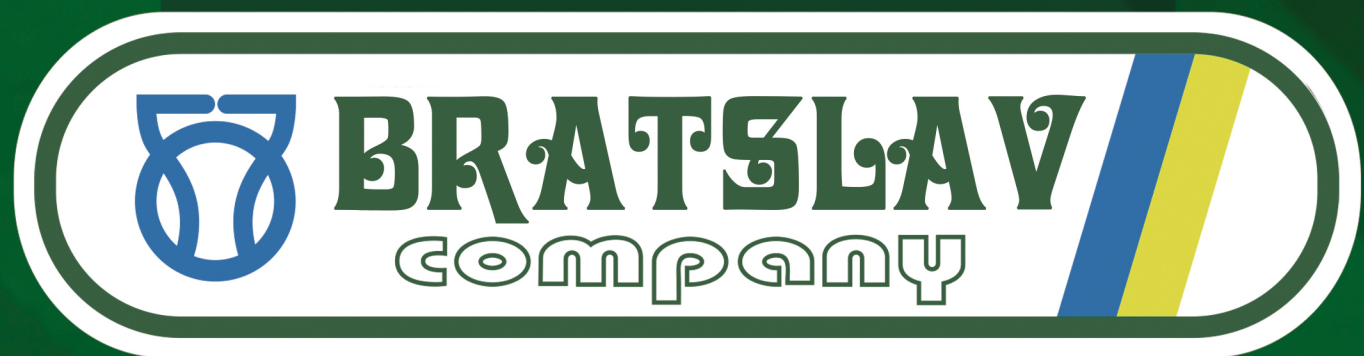




*To be present by soul, mind and equipment  
in every agricultural enterprise of the world*



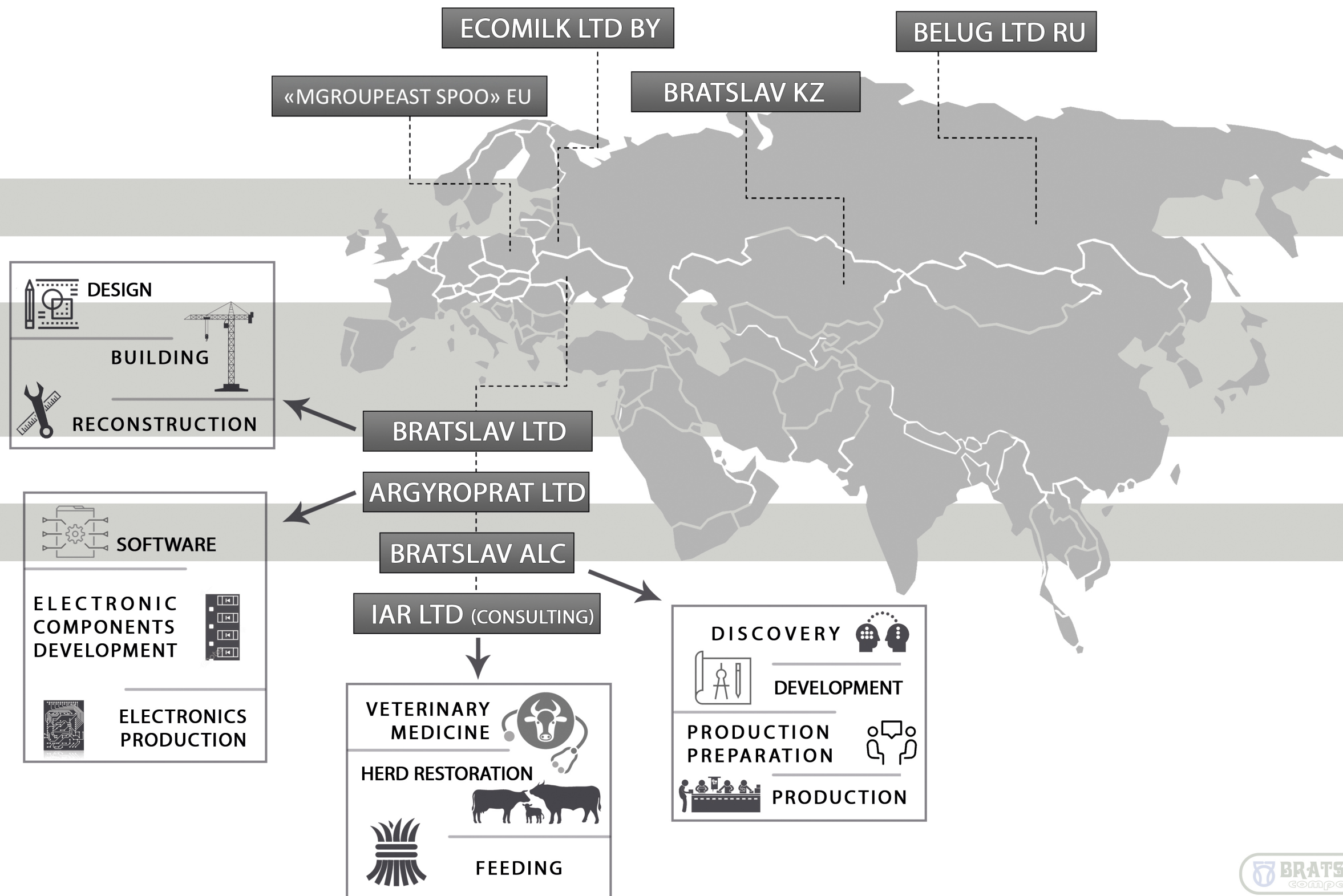
**UKRAINIAN COMPANY  
OF INTERNATIONAL LEVEL**

*Simplifying your work!*

# OUR TEAM WORK



CONSISTS OF 16 DIFFERENT COMPANIES

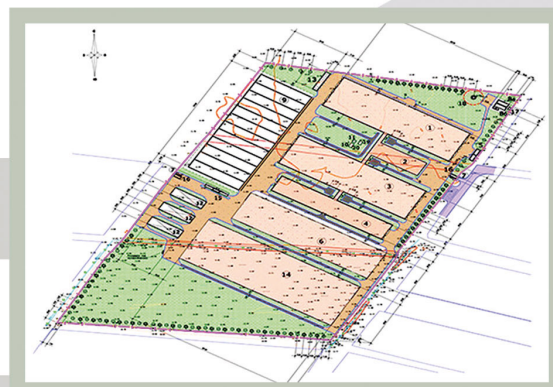




# INTEGRATED APPROACH

WE CREATE ENTERPRISES TURN KEY PROVIDING ALL NECESSARY SUPPORT BOTH REMOTE AND ON THE SPOT

DESIGNING ENTERPRISES



STAFF EDUCATION



COMPLEXES` MODULATION



CATTLE DELIVERY



BUILDING



EQUIPMENT DELIVERY

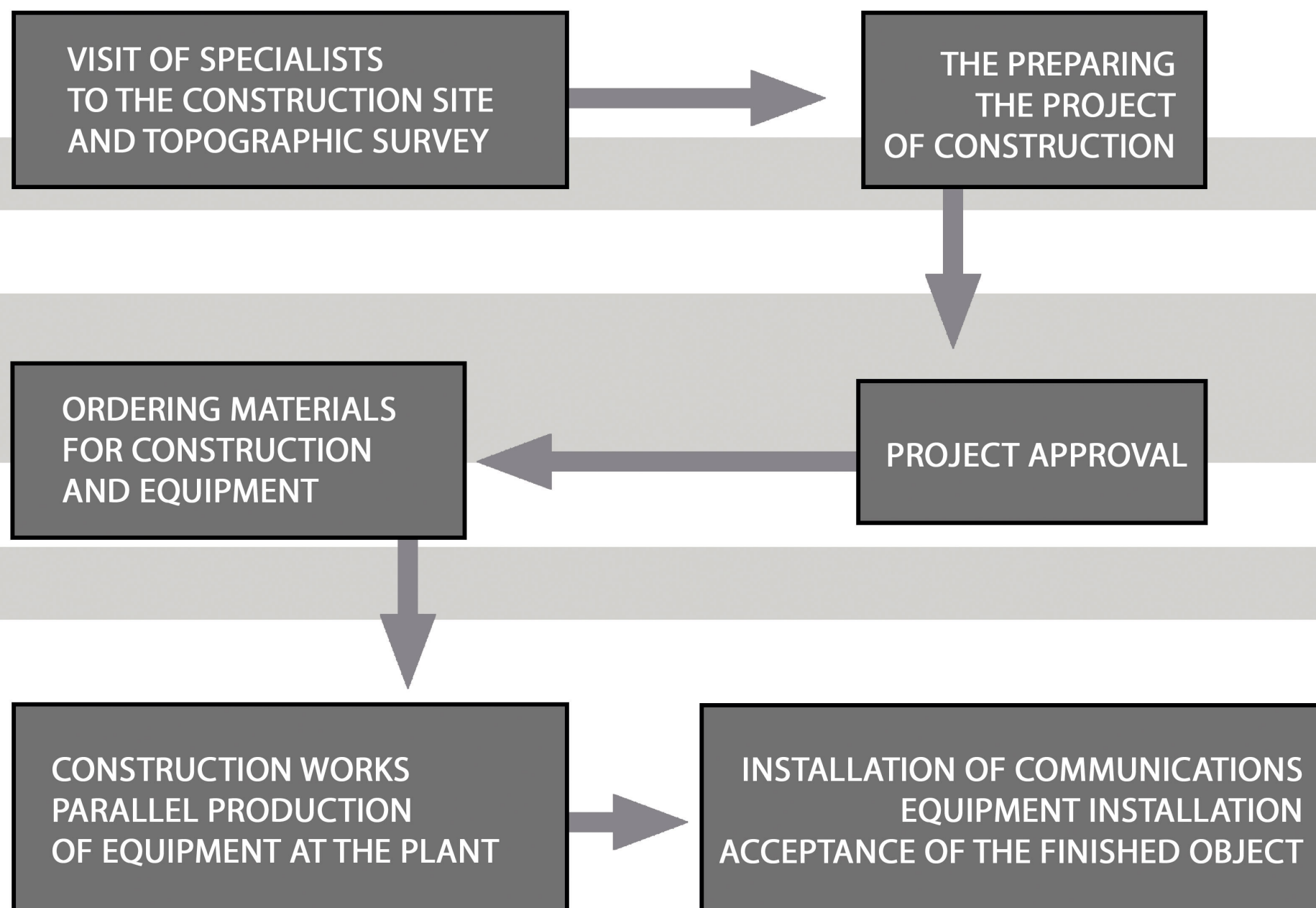




# CONSTRUCTION

WE CAN BUILD YOUR PRODUCTION FROM SCRATCH ANYWHERE

CONSTRUCTION



# PRODUCTION OF METAL STRUCTURES

THE PLANT HAS ALL THE NECESSARY EQUIPMENT FOR THE MANUFACTURE OF METAL STRUCTURES OF ANY COMPLEXITY AND PURPOSE, AND THE EQUIPMENT OF PRODUCTION FACILITIES AND MECHANISMS ALLOW PERFORMING ALL TYPES OF WORK WITH ROLLED PROFILES AND SHEET METAL.



# OUR OBJECTS



OUR OBJECTS

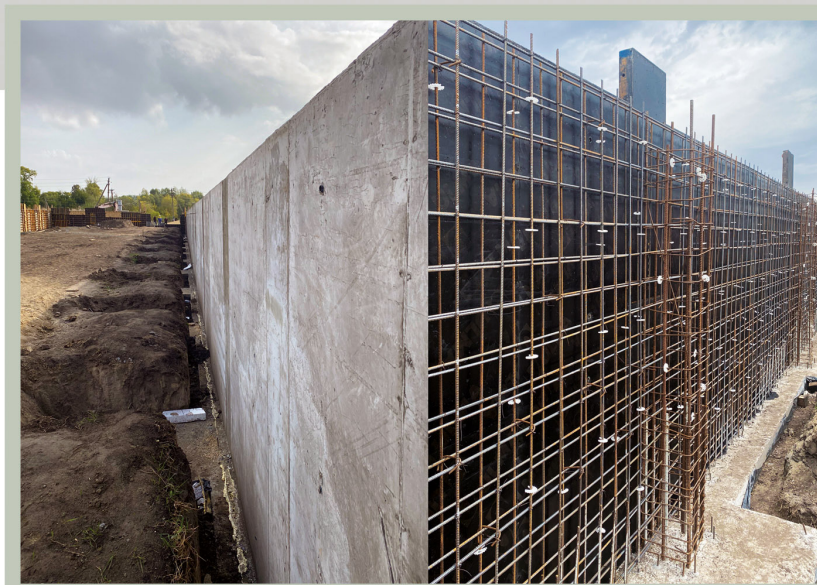
CONSTRUCTION OF NEW COMPLEXES FROM SCRATCH



RESTORATION OF STABLES OF OLD FARMS



WAREHOUSES



# LCC «ARGIROP RAT»

## OUR PRODUCT



INNOVATION





# SUPPLY OF ANIMALS AND GENETIC MATERIAL

OUR ANIMALS ARE IMPORTED FROM FRANCE, GERMANY, POLAND AND HUNGARY

A COMPLEX APPROACH

JERSEY BREED

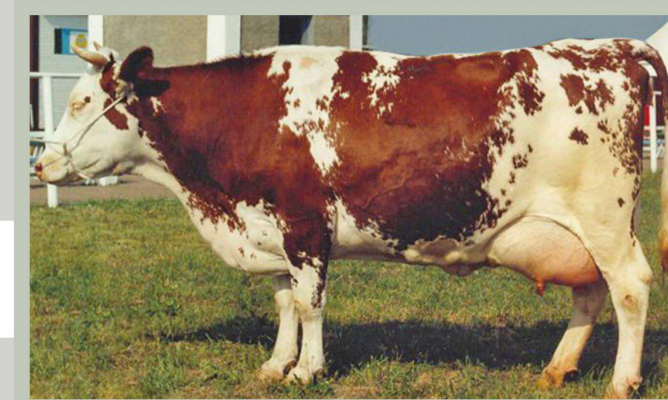


GOLSTEIN BREED



UKRAINIAN  
BLACK-SPECKLED  
DAIRY BREED

UKRAINIAN  
RED-SPECKLED  
DAIRY BREED



SOUTHERN  
BEEF BREED



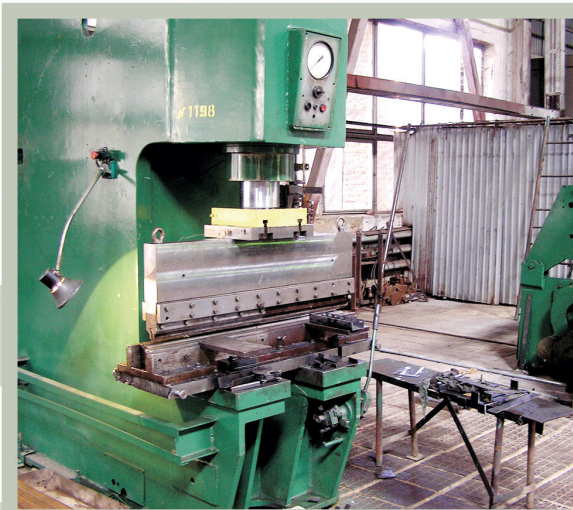
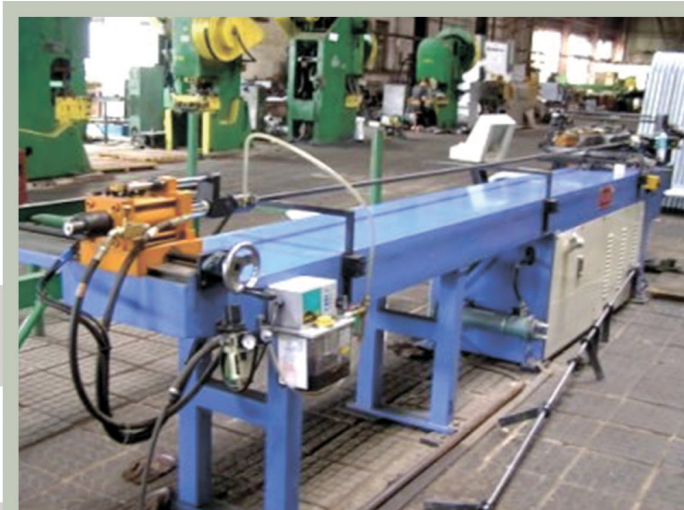
ABERDEEN  
ANGUS



# PRODUCTION FACILITIES



STRUCTURE



## MILKING PARLOR "HERRINGBONE"

CONTROLS MILKING MODE ACCORDING TO INDIVIDUAL FEEDBACK FROM EACH COW. INFORMATION ABOUT NADE INCREASE, DISEASE SYMPTOMS OR INJURY IS TRANSFERRED TO ACS EQUIPPED WITH UNIQUE "LACTOROBIC" MANIPULATOR



## PIPE-LINE MILKING UNIT UDM

INTENDED FOR MILKING OF THE HERD UP TO 200 COWS ON THE TETHERED KEEPING.  
FUNCTION OF THE GROUP MILK ACCOUNTING PROVIDED BY EACH DAIRYMAN.  
CONSTRUCTION OF THE MILKING UNIT EXCLUDES LIFTERS  
WHICH REDUCES MILK TRANSPORTATION, GIVES OPPORTUNITY OF MECHANICAL FEEDING  
WHILE MILKING AND MILK UNIT CLEANING.  
MILK PIPE-LINE INCREASES QUALITY OF MILK AND IS MUCH MORE PROFITABLE  
THAN IN COMPARISON WITH MILKING PARLOR INSTALLATION



## COW SCRATCHERS

### PASSIVE SCRATCHER



DESIGNED FOR BIG LOADS

### ACTIVE DRIVE BRUSH



SWITCHES ON BY COW'S PUSH,  
HAS PROTECTION FROM TAIL WINDING,  
SECOND PUSH ENABLES OPPOSITE MOVE

## VETERINARY BENCHES

FOR INDIVIDUAL CATTLE FIXATION  
FOR VETERINARY  
OR ZOOTECHNICAL PURPOSES



The use of a hoof fixing machine allows you quickly and easily fix the animal and carry out one of several veterinary procedures for cows weighting up to 800 kg:

- functional hoof treatment,
- insemination,
- gynecological and rectal examination,
- trimming horns,
- blood sampling and medication,
- tagging and rating,
- machine productivity – 80 cows per shift

## GROUND BED SETTER

FORMS GROUND BEDS FOR PLANTING  
SEEDLINGS OF BERRIES (STRAWBERRY), VEGETABLES, TREES AND GRAPES  
SIMULTANEOUSLY FITS THE WATERPIPE AND COVERS WITH AGROFIBER  
MAKES HOLES FOR SEEDLINGS AND FIXES THEM WITH SOIL



### TECHNICAL CHARACTERISTICS:

Height	2200 mm
Width	1900 mm
Length	1250 mm
Weight	750 kg
Maximum width of the ground bed	1 m
Maximum width of the fiber used	1400 mm
Ground bed height	10-30 sm
Tractor power required	50 hp
Productivity	0.5-0.9 hectare per hour

# TRUCK TRAILER

# NPS 1.0-2.0

OVERTURNING OF THE PLATFORM  
IS PROVIDED BY HYDROSYSTEM OF THE TRACTOR



## TECHNICAL CHARACTERISTICS

	1T	2T
Length	2850 mm	3140 mm
Width	1270 mm	1750 mm
Dimensions	1150 x 1950 x 300 mm	1630 x 2150 x 400 mm
Height	1030 mm	1270 mm
Track width	1100 mm	1180 mm
Maximum weight	1.2 t	2.3 t
Weight	0.1 t	0.3 t

## TRAILER P-6, P-10, P-13

CONSTRUCTIVE SOLUTION  
FOR SHIPPING  
AGRICULTURAL LOADS ETC.

GARBAGE OR HARVEST SHIPPING



### TECHNICAL CHARACTERISTICS

	П-6	П-10	П-13
Length	5185 мм	6130 мм	7495 мм
Weight	1800 кг	2300 кг	3600 кг
Width	2500 мм	2600 мм	2600 мм
Height	2000 мм	2100 мм	2200 мм
Track width	2075 мм	2095 мм	2056 мм
Maximum weight	8000 кг	12200 кг	16600 кг

## MIXERS-DISTRIBUTORS

## KSP

POWERED FRAME  
ADDITIONAL STRENGTH OF UNITS SUPPLY



## TECHNICAL CHARACTERISTICS

Model	KSP-5	KSP-6	KSP-8	KSP-9	KSP-10	KSP-12	KSP-16	KSP-18	KSP-20	KSP-24
Volume	5	6	8	9	10	12	16	18	20	24
Length, mm	4200	3950	4010	4120	4240	4400	6450	6600	6700	6700
Height, mm,	2100	2350	2500	2650	2800	2800	2700	2800	2800	3000
Height of the unloading hole	660	780	780	780	780	780	780	780	780	780
Track width	1160	1550	1550	1550	1550	1550	2000	2000	2000	2000
Width	2000	2200	2200	2200	2200	2400	2200	2200	2400	2400
Maximum weight of the feed uploaded, mm	1600	2000	2600	3000	3300	4000	5300	6000	6600	8000
Number of screws							2	2	2	2
Knives amount	5	5	5	5	5	5	2x5	2x5	2x5	2x5
Turnover amount per minute	540	540	540	540	540	540	540	540	540	540
Auger speed, turnovers per min	25	25	25	25	25	25	25	25	25	25
Tractor power to gregate with, kN	0.9	1.4	1.4	1.4	1.4	1.4	2.0	2.0	3.0	3.0
Staff	1	1	1	1	1	1	1	1	1	1

Main advantages:

- Exact weighing of every component of animals' diet
- Equal distribution of food
- High quality, reliability
- Competitive price